



# 5 kilometers ≈ 3.10686mi Quakertown, Pennsylvania

40° 26' 48.40", -75° 20' 25.80"

Certified Course #  
**PA19005NP**



Effective Dates:  
**1.25.19**  
through  
**12.31.29**

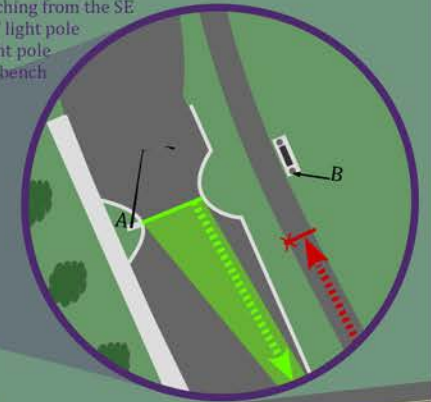
Start: 40° 26' 48.40", -75° 20' 25.80"  
On 4<sup>th</sup> St. heading SSE, even with light pole  
at northern most curb "bump out"

Mile 1: 40° 26' 44.15", -75° 20' 51.78"  
On Brookfield Cir. heading East, 7' before driveway to house #1049

Mile 2: 40° 27' 01.31", -75° 20' 40.83"  
On Krupps Park Trail heading SE, at the NE corner  
of football field, 22' after pole #QB62-18

Mile 3: 40° 26' 44.20", -75° 20' 20.10"  
On Krupps Park Trail heading NNW, 28' after the park bench

Finish: 40° 26' 48.32", -75° 20' 25.41"  
On Krupps Park Trail approaching from the SE  
A) 49'11" ESE of the "Start" light pole  
B) 21'10" South of the light pole  
to the south of the park bench



**Notes:**

- Map is not to scale
- Mile locations are not certified
- Measurement assumes a single runner
- This Official Course Map may not be altered
- Measurement assumes no parked vehicles on the course
- Notations are in relation to the Runner's direction of travel
- Course has full access to the course route unless otherwise noted
- Route line represents measurement along the Shortest Possible Route

Scan for  
map & certificate



Measured on  
December 29, 2018  
Measurement & Map by:  
**NATHAN ORCH**

Start/Finish  
497ft/152m  
High  
529ft/161m  
Low  
492ft/150m

